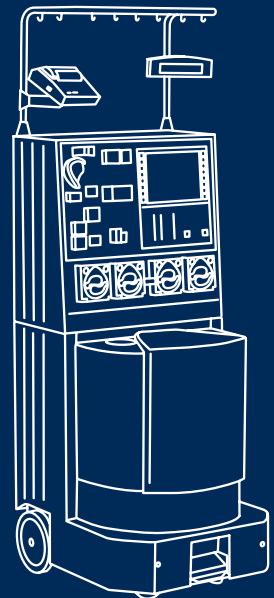


TRANSFUSION TECHNOLOGY

COM.TEC®

THE MULTI-PROCEDURAL APHERESIS
PLATFORM



COM.TEC®

The multi-procedural apheresis platform

Donation as well as therapeutic procedures

Continuous flow technology

Component collection outside of the centrifuge

Optional single-needle mode for selected protocols

Ultimate donor/patient safety

Apheresis sets with pre-donation capability

Easy (drawer like) installation of the separation chamber

Automatic or manual process management for all protocols

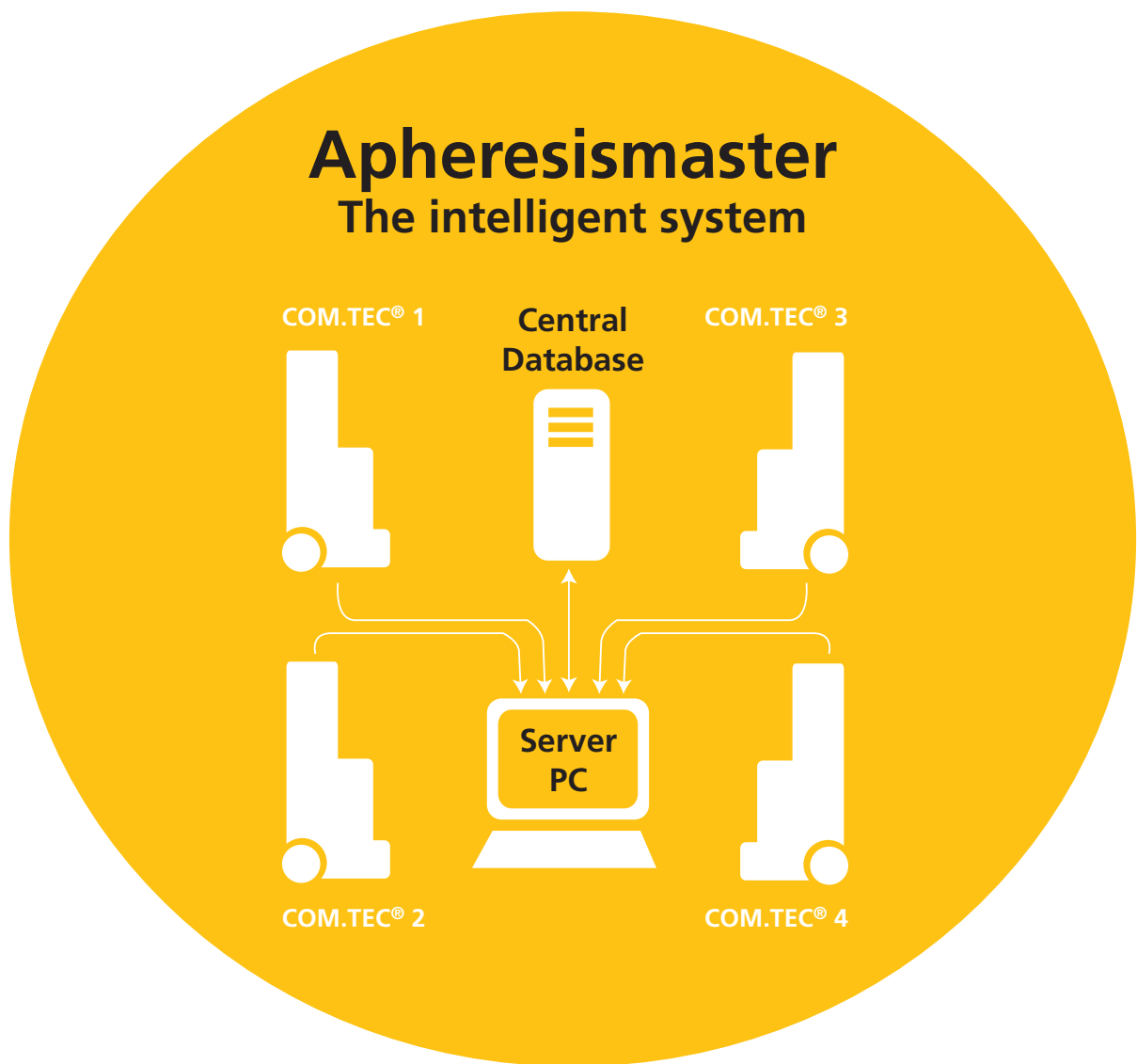
Equipped as standard with printer

Apheresismaster – the optional data management



Apheresismaster

The intelligent system



The “Apheresismaster” provides a bi-directional radio transmission capability of cell separators with a server PC. As an option, the server PC can be linked to the lab and the central data base.

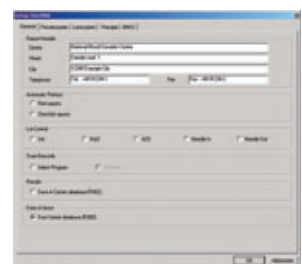
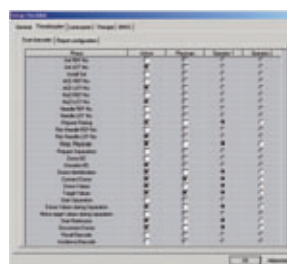
The total monitoring of the production process with central documentation provides completely new perspectives. Apheresismaster documents all procedures available on COM.TEC®.

CENTRALIZED MONITORING

- For supervising the production process.
- All relevant separation data are immediately available when alarms occur.

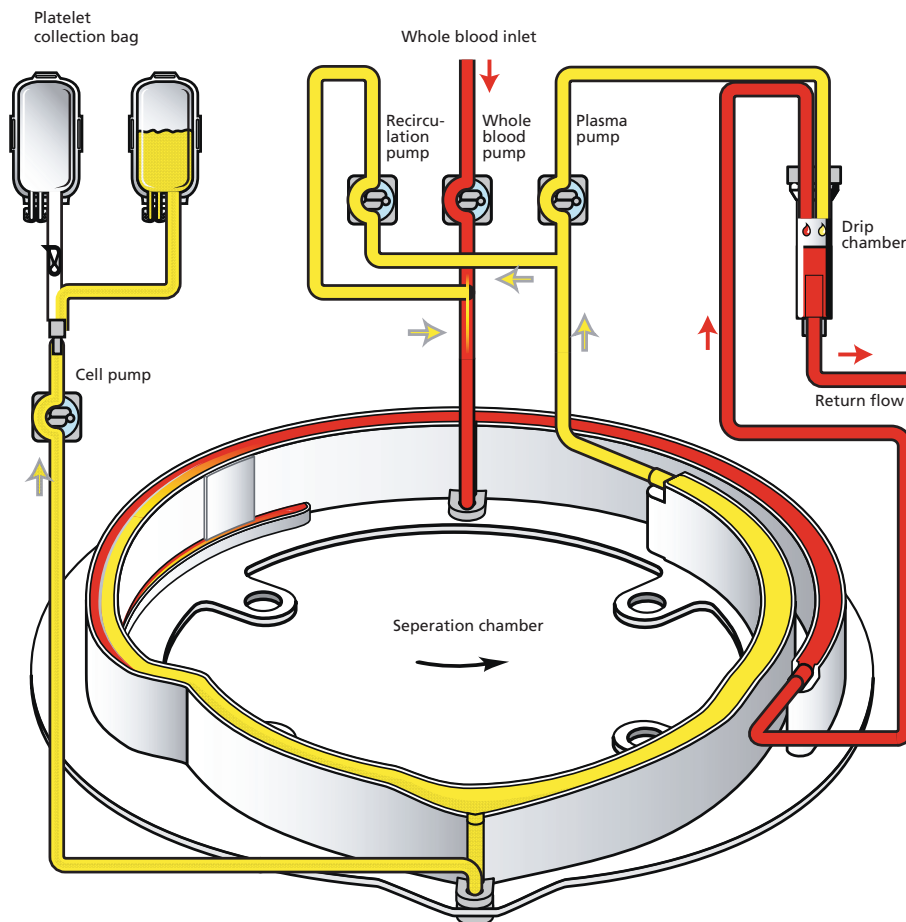
DOCUMENTATION

- Create your individual separation records matching your requirements. The complete records can be transmitted and printed on any PC.



PLATELET COLLECTION

- Leuko-depleted platelet units without filtration
- Platelet collection in dual- or single-needle mode available
- Plasma recirculation for optimal flow conditions
- Donor-tailored separation parameters, for example “best flow”
- Protocol also recommended for therapeutic platelet depletion



By the plasma recirculation the hematocrit in the separation chamber is adjusted to 37% and almost constant flow conditions are maintained. This also prevents modulations of the interface, and high level platelet quality is achieved.

The RBC barrier ensures the leuko-depleted flow of platelets into the second separation step.

THERAPEUTIC PROTOCOLS

Therapeutic plasma exchange

- Plasma exchange efficacy 87% on average
- Single-needle mode available

RBC exchange

- Implemented RBC replacement calculator
- Accurate achievement of desired post Hct
- Very efficient HbS depletion

RBC depletion

- Accurate achievement of desired post Hct
- Short procedure times

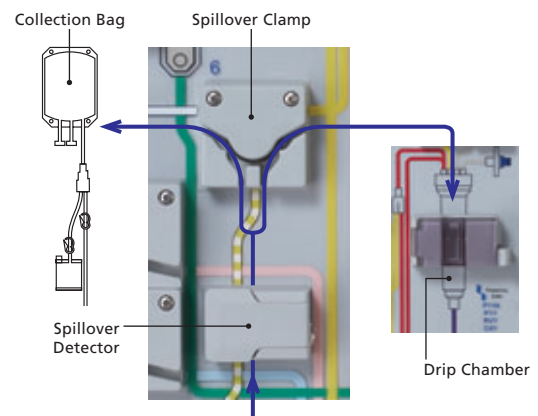
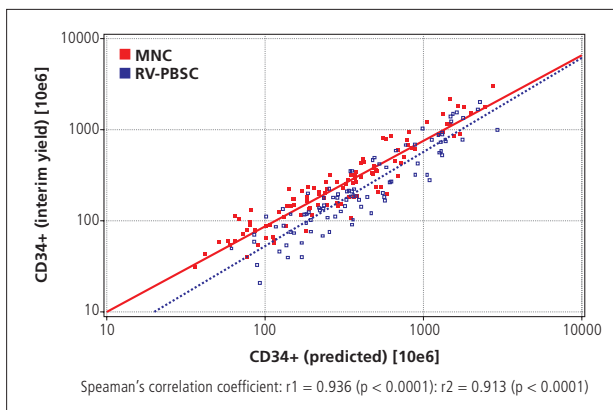
Plasma treatment on adsorber columns

- Flexible use of different adsorber columns

Therapeutic depletion of platelets

STEM CELL COLLECTION

- Variable protocol selection due to different donor/patient conditions
- Protocol selection dependent on targets
- Lymphocyte collection for consecutive photochemotherapy and donor lymphocyte infusions (DLI)
- CD34 + prediction



Correlation of predicted vs. collected CD34⁺ yield [x10⁶ Cells].

AutoMNC procedure for automated collection:

The spillover sensor detects the passing cell fraction and triggers the spillover clamp from "return" to "collection".



Programs and disposables COM.TEC®

Programs	Platelet	Disposables
PLT 5d	Platelet apheresis, 5-day storage (simultaneous plasma harvest possible)	C5L
PLT 5d	Platelet apheresis, Triple-concentrates, 5 day storage (simultaneous plasma harvest possible)	C5LT
PLT 5d-SN	Single needle platelet apheresis, 5 day storage (simultaneous plasma harvest possible)	S5L
Programs	Stem cell	Disposables
PBSC-Lym	Peripheral blood stem cell collection, lymphocyte collection or depletion	C4Y
RV-PBSC	Peripheral blood stem cell collection, reduced collection volume	RVY
MNC	Peripheral blood stem cell collection, mononuclear cell collection or depletion	P1Y
autoMNC stem cells	Automatic collection of peripheral blood stem cells, mononuclear cell collection	P1YA
autoMNC lymphocytes	Automated collection of lymphocytes in dual needle mode for consecutive photochemotherapy or DLI*	P1YA
Granulo	Granulocyte collection	P1Y
BMSC	Bone marrow stem cell processing	P1Y + BMSC
Programs	Therapy	Disposables
Deplet	Depletion of platelets or white blood cells	C4L
RBC	Therapeutic red cell exchange or depletion	PL1; US: RBC
TPE	Therapeutic plasma exchange	PL1; US: TPE
Adsorb	Therapeutic plasma treatment e. g. immunoadsorption	P1R

*DLI (donor lymphocyte infusion)



Caring for Life

Fresenius HemoCare GmbH

A company of the
Fresenius Kabi group

Pfingstweide 53
61169 Friedberg · Germany
Phone: +49-61 72-6 08 8499
Fax: +49-61 72-6 08 8498
www.fresenius-kabi.com

B 201 GB 04/2007 (Pure:Comm)

© Copyright 2007, Fresenius HemoCare GmbH

Your local sales organization:

